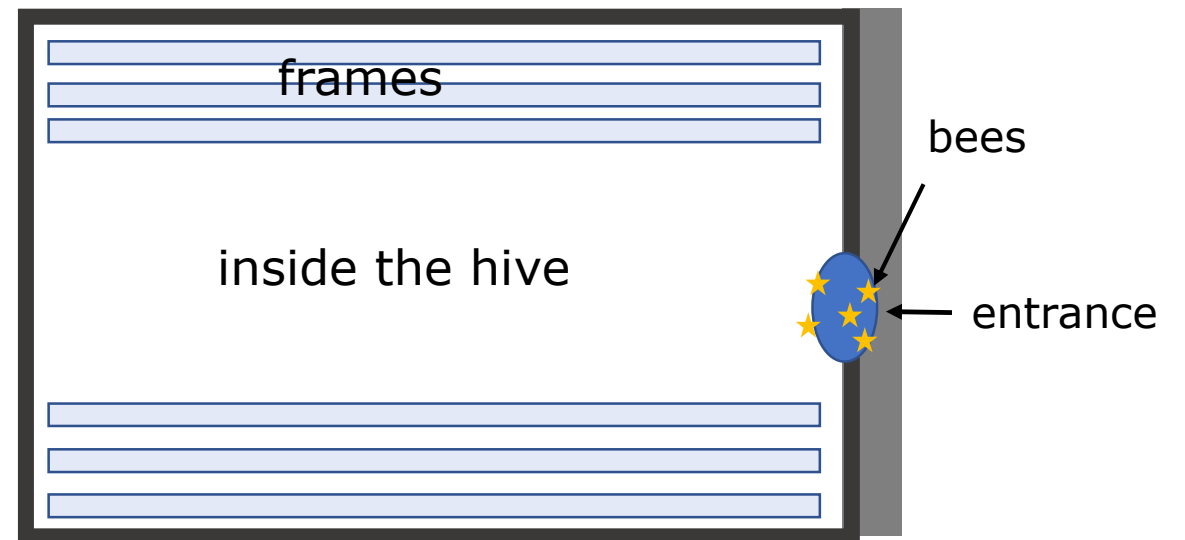
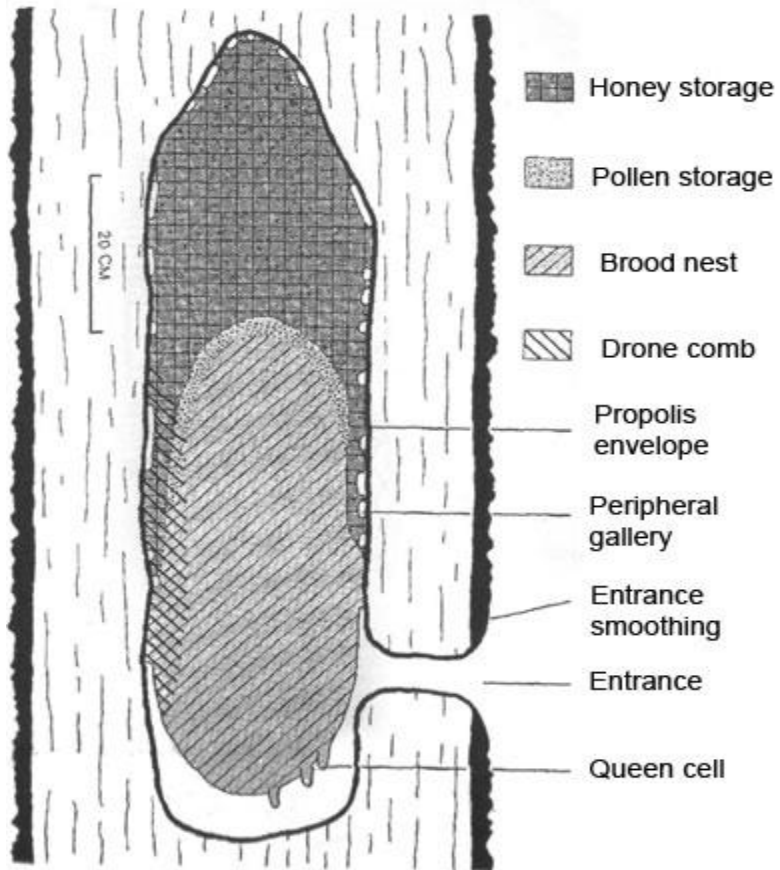




**Understanding bee behaviour,
including the effects of temperature, on their ability
to defend their hives from intruders, as tested on the
German wasp, *vespula germanica*.**

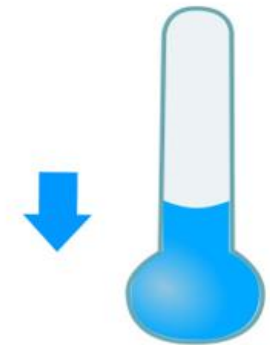
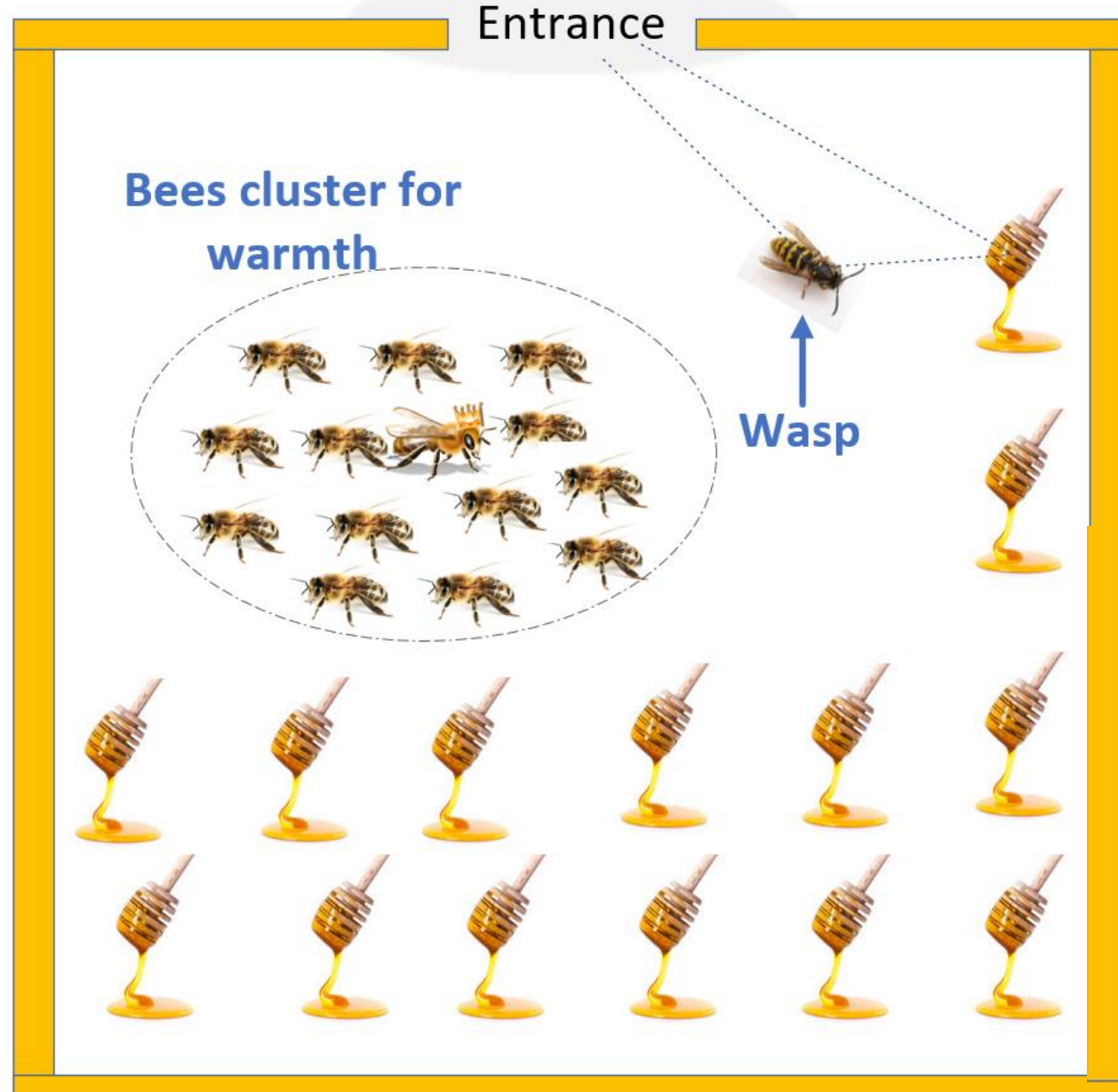
Hives in Nature Vs. Commercial Hives



Ref: T.D Seeley & R.A. Morse,
Cornell University, USA, 1976

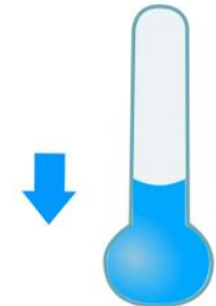
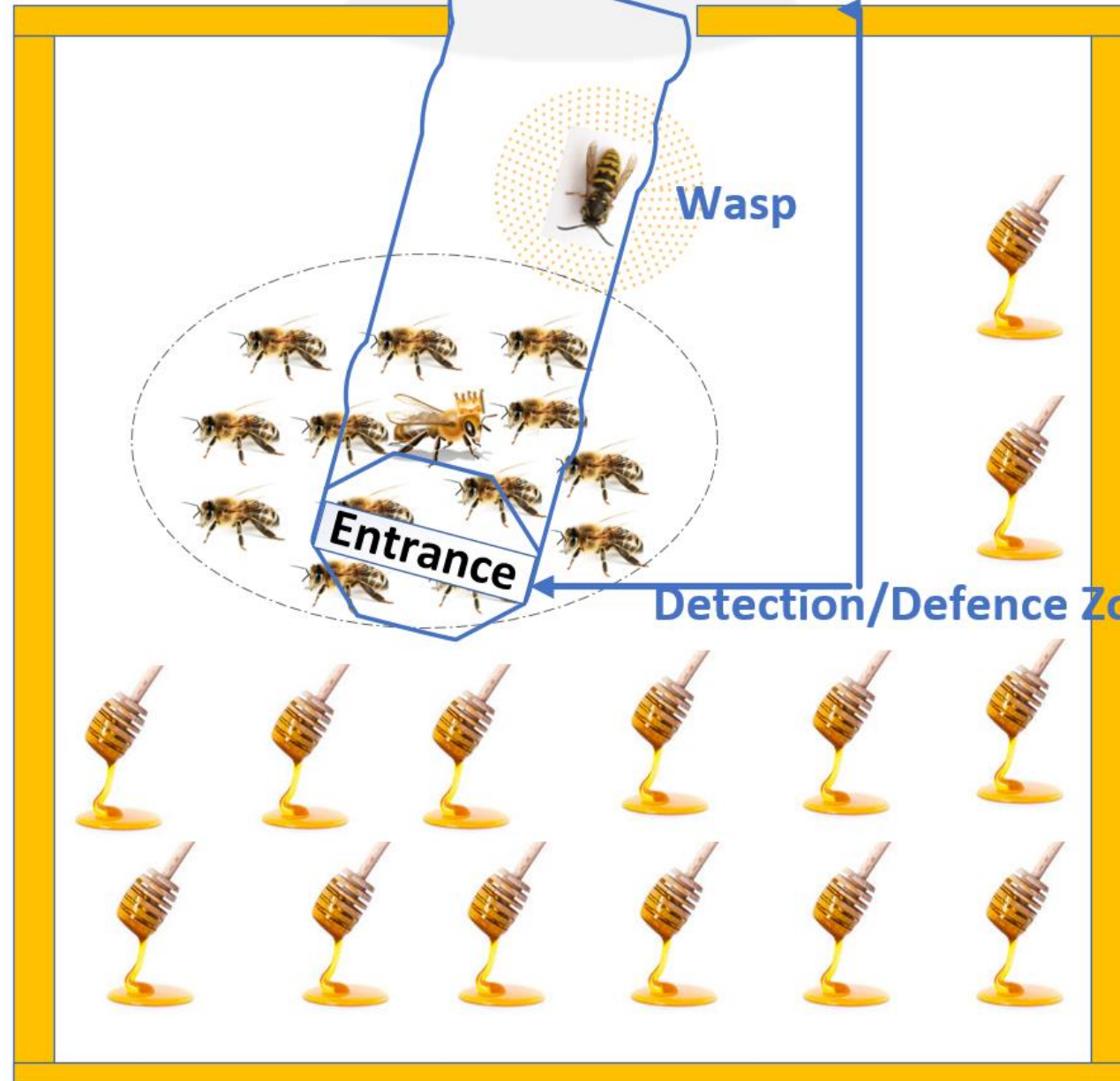
Unguarded

Detection/Defence Zone



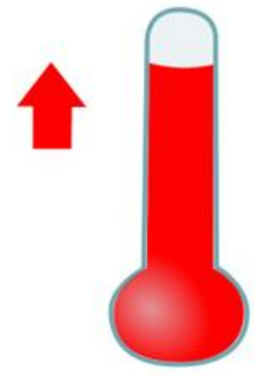
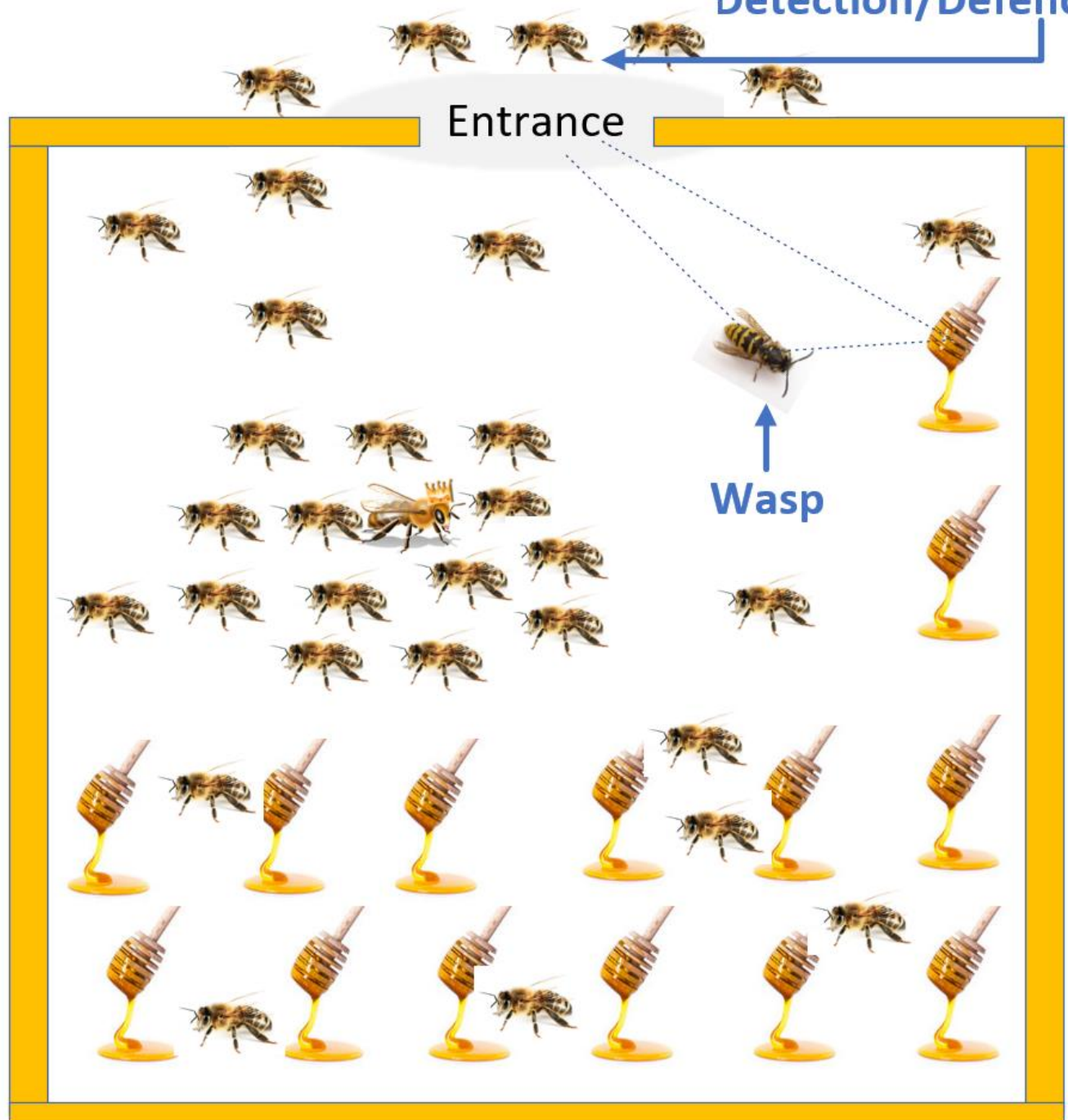
Temp
- 12 c

Unguarded

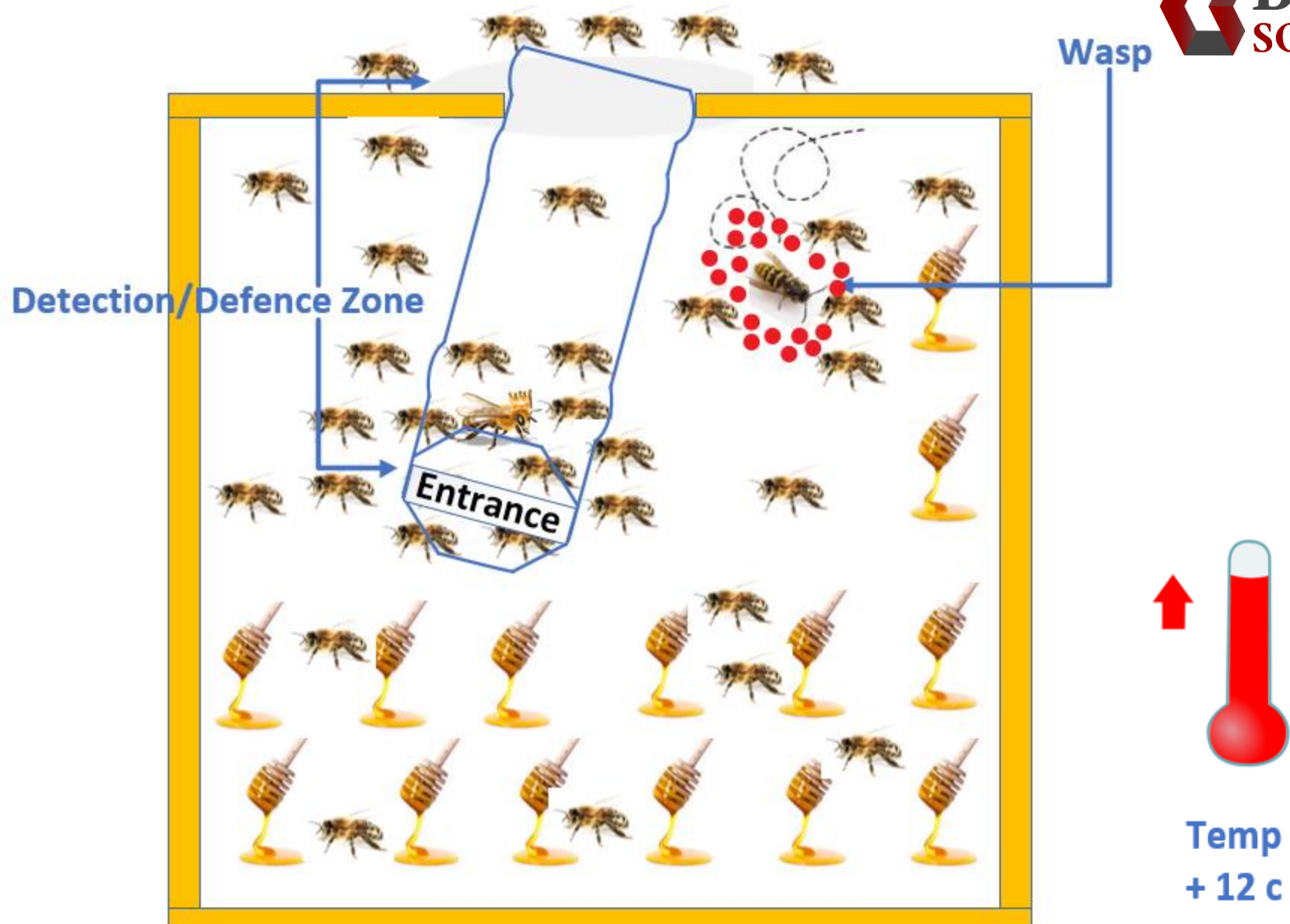


Temp
- 12 c

Detection/Defence Zone



Temp
+ 12 c



23/08/2018 12:23:51



**Field Trials on
Wasps attacking
Beehives**

Thank You